

# Residence Information

Prospective Students

LIVE AND LEARN ON-CAMPUS



# CONTENTS

When to Apply	2
Campus Map	3
Housing Unit Descriptions and Floor Plans	4-10
Perks of Living in Res	11
Costs & Fees	12
What to Bring?	13
FAQ	14
Contact Info	15

# WHEN TO APPLY...

We start accepting applications for Residence as follows:

- For the **full academic year** (September - April) and the **fall term** (September - December), we start accepting **October 1<sup>st</sup>**.
- For the **winter term** (January - April), we start accepting **November 1<sup>st</sup>**.
- For the **spring/summer term** (May - August), we start accepting **February 1<sup>st</sup>**.
- **Family applications** are accepted at any time during the year when accompanied by a letter of reference from a previous landlord.

**Note:** There is a \$20 non-refundable application fee to apply for Residence, and is filled on a first come, first served basis, so **APPLY EARLY!**

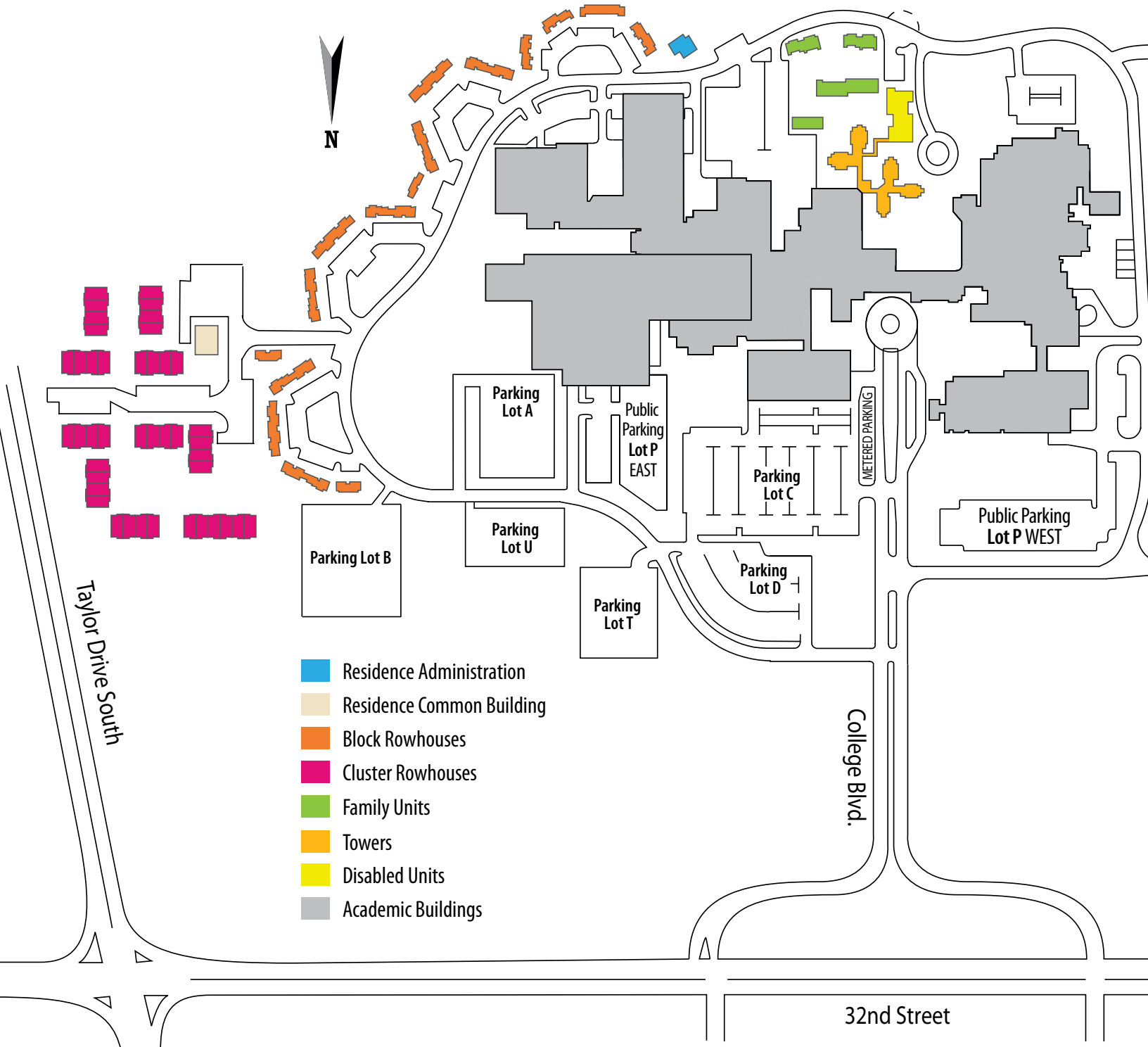
# ON-CAMPUS STUDENT HOUSING



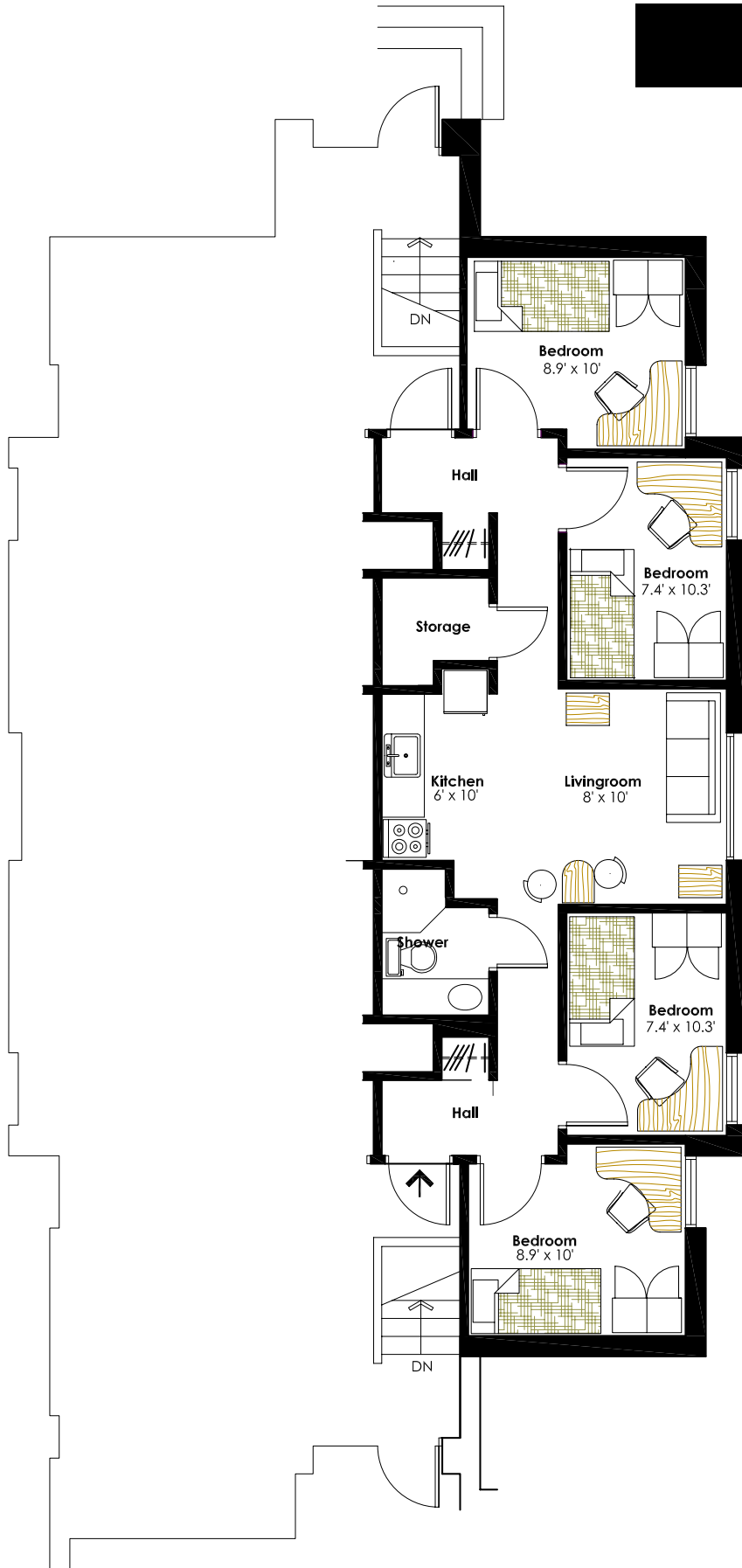
# CAMPUS MAP



The Towers are attached directly to the College. The Cluster Rowhouses and the Block Rowhouses are around the east side of the college (Both are approx. a 2-5 minute walk to the main Campus).



## 4 BEDROOM TOWER



There are five towers, each containing eight identical suites which accommodate 160 students. All five towers are connected directly to the main campus. There are four laundry rooms located in the Towers complex. All units are fully furnished with the exception of bedding, towels, dishes, kitchen utensils and small appliances. Rent includes all utilities and cable television in the living room. Students will need to arrange to have their phone/internet hooked up and assume responsibility for their own bill.

### \$ MONTHLY (per student)

\$400.00

### LAYOUT

**Apartment Style.** 4 students share kitchen, living room and 1 washroom. Each student has his/her own bedroom with single bed, desk, desk chair and a closet. The living room has a couch, chair and coffee tables. The kitchen has a stove, oven, fridge, table and chairs. A small freezer is also provided. All windows have window coverings.

### BENEFITS

- Attached to the main campus building
- Organized social events.
- Newly renovated units.
- Parking available.
- Most affordable option on campus.

### IDEAL FOR...

- First year students looking to meet new people, get the "college" experience, and are living away from home for the first time.

## 4 BEDROOM CLUSTER ROWHOUSE

Complex built in four clusters. All units are fully furnished with the exception of bedding, towels, dishes, kitchen utensils and small appliances. Rent includes all utilities and cable television in the living room. Students will need to arrange to have their phone/internet hooked up and assume responsibility for their own bill.

### \$ MONTHLY (per student)

\$475.00

### LAYOUT

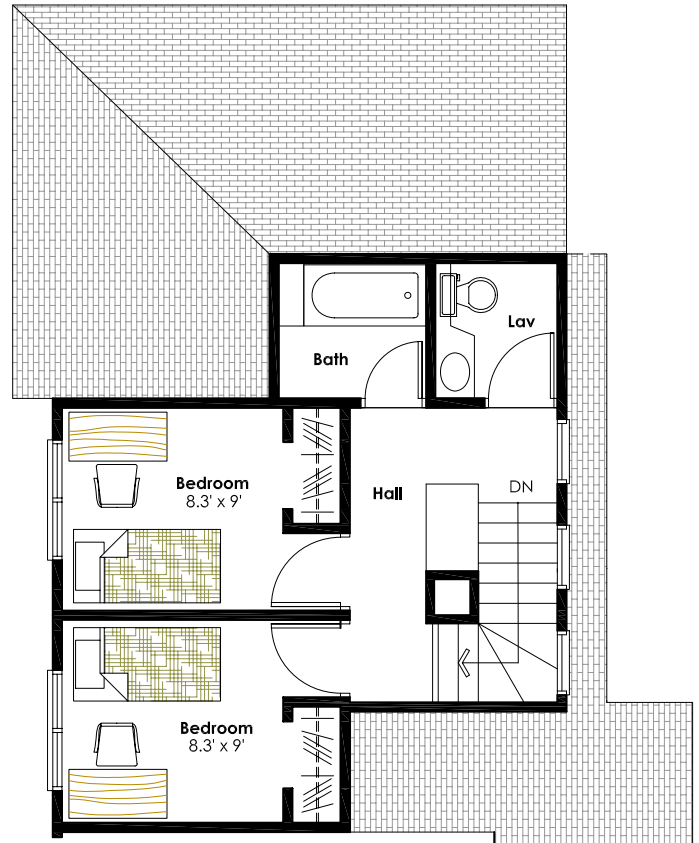
**Townhouse style - 2 floors.** 4 students share kitchen, living room and 2 half baths with a separate shower area. Each student has his/her own bedroom with single bed, desk, desk chair and a closet. The living room has a couch, chair and coffee tables. The kitchen has a stove, oven, fridge, table and chairs. A small freezer is also provided. All windows have window coverings.

### BENEFITS

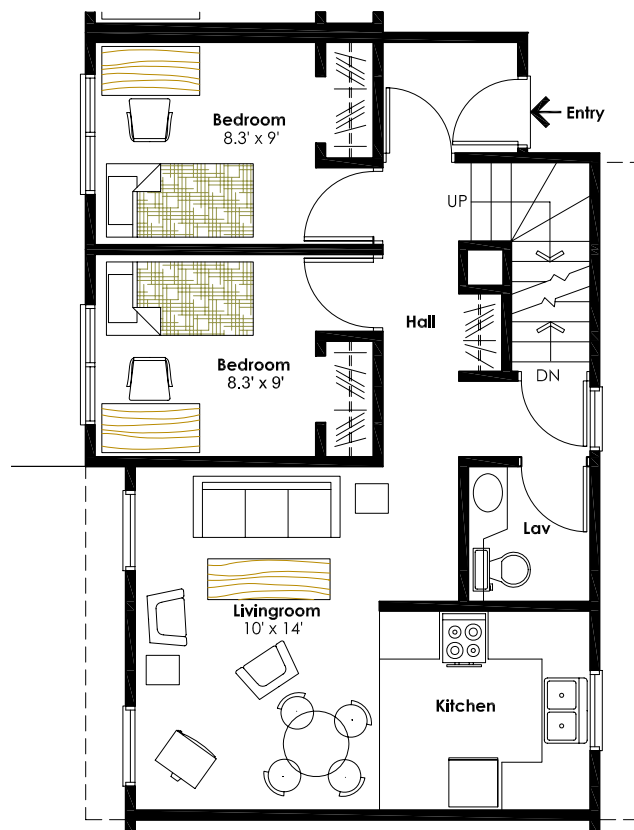
- 2-minute walk from main campus building.
- Full unfinished basement.
- Lots of storage.
- Basement can be used for quiet study space, etc.
- Parking available close to units.
- Offers more space than tower units.

### IDEAL FOR...

- Second, third and fourth year students.
- Students who have a group of friends with whom they would like to live.

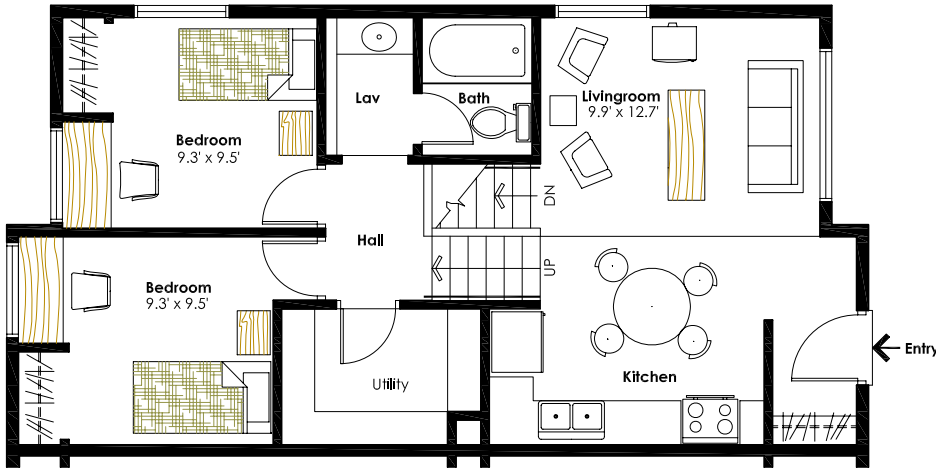


Upper Floor

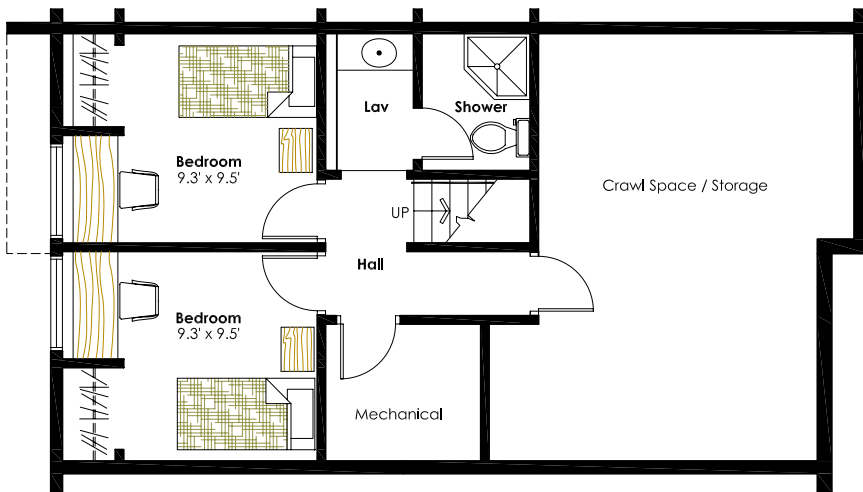


Lower Floor

## 4 BEDROOM BLOCK ROWHOUSE



Main & Upper Level



Lower Level

Complex built in five blocks. All units are fully furnished with the exception of bedding, towels, dishes, kitchen utensils and small appliances.

Rent includes all utilities and cable television in the living room. Students will need to arrange to have their phone/internet hooked up and assume responsibility for their own bill.

**\$ MONTHLY (per student)**

\$515.00

### LAYOUT

**Townhouse style - 2 floors.** 4 students share kitchen, living room and 2 full bathrooms with a separate shower area. Each student has his/her own bedroom with single bed, desk, desk chair and a closet. The living room has a couch, chair and coffee tables. The kitchen has a stove, oven, fridge, table and chairs. A small freezer is also provided. All windows have window coverings.

### BENEFITS

- 5-minute walk to main campus building.
- Newest of all residence options.
- Parking available close to units.
- Storage space available.
- Offers more space than tower units.

### IDEAL FOR...

- Second, third and fourth year students.
- Students who have a group of friends with whom they would like to live with.

## 4 BEDROOM ROWHOUSE (Apprentice)

**\$131.25/week**

Short-term living option for students who are on campus for any of our trades programs. 2 minutes from main campus building. Full unfinished basement. Parking available close to units. Students can apply for these units by phone.

### IDEAL FOR...

Out-of-town Apprenticeship students who will only need housing for the duration of the in-class portion of the RAP.

## 2 BEDROOM CLUSTER ROWHOUSE

Complex built in four clusters. All units are fully furnished with the exception of bedding, towels, dishes, kitchen utensils and small appliances. Rent includes all utilities and cable television in the living room. Students will need to arrange to have their phone/internet hooked up and assume responsibility for their own bill.

### \$ MONTHLY (per student)

\$525.00

### LAYOUT

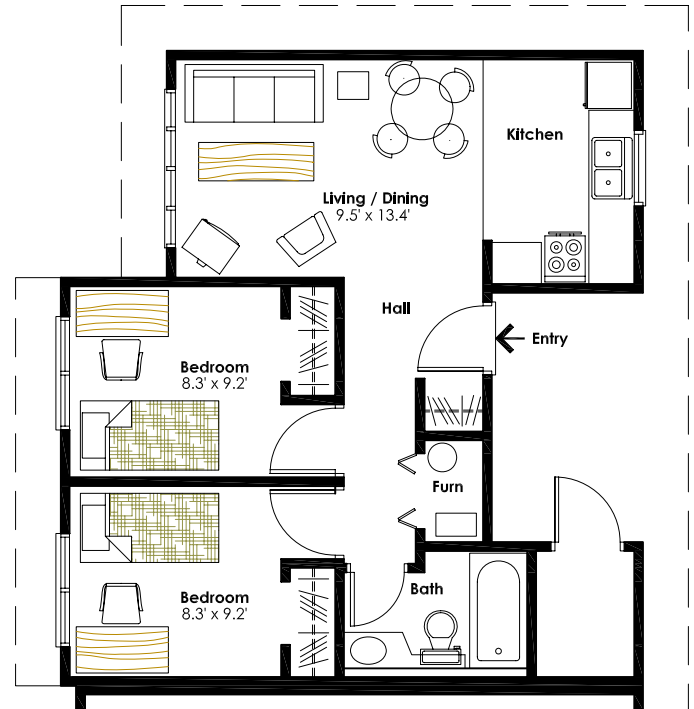
**Townhouse style.** 2 students share kitchen, living room and 1 washroom. Each student has his/her own bedroom with single bed, desk, desk chair and a closet. The living room has a couch, chair and coffee tables. The kitchen has a stove, oven, fridge, table and chairs. All windows have window coverings.

### BENEFITS

- 2-minute walk from main campus building.
- 2 students sharing a unit.
- Located in a quieter area of the campus.
- Parking available close to unit.

### IDEAL FOR...

- Students who prefer to not live with a group of people.
- Mature students.



Two Bedroom Unit

## BACHELOR UNITS

### \$ MONTHLY

\$545.00

### LAYOUT

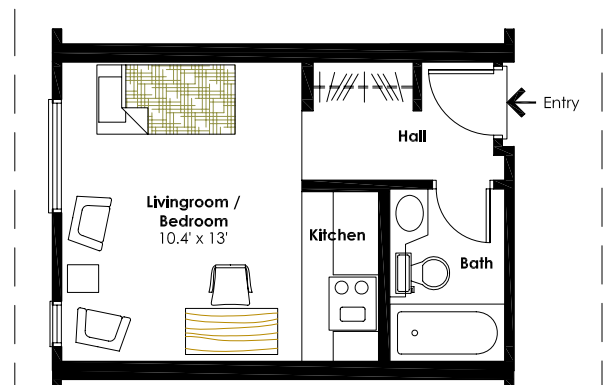
**Townhouse style.** Students are in a self-contained unit that includes living and bedroom with single bed, kitchen and washroom. The living room has chairs and a coffee table. The kitchen has a stove, fridge, table and chair. All windows have window coverings.

### BENEFITS

- 2-minute walk from main campus building.
- Students are in a self contained unit.
- Located in a quiet area of the campus.
- Parking available close to unit.

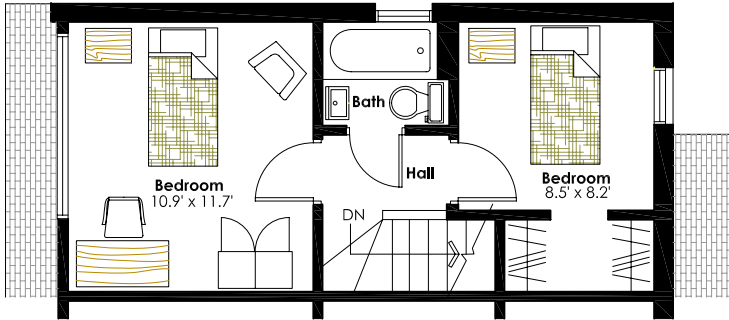
### IDEAL FOR...

- Students who require privacy and prefer to not share a living space.
- Mature students.

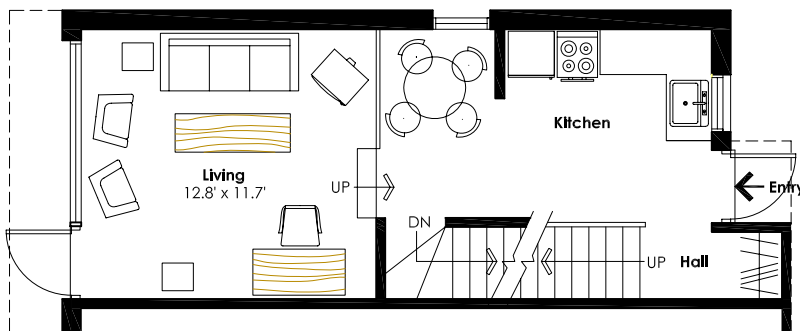


Bachelor Unit

## 2 BEDROOM FAMILY UNITS



Second Level



Main Level

Rent includes all utilities and cable television in the living room. Students will need to arrange to have their phone/internet hooked up and assume responsibility for their own bill.

### \$ MONTHLY (per unit)

\$740.00

### LAYOUT

**Townhouse style - 2 floors.** Full kitchen, dining room and living area on main level. Second level includes master bedroom, smaller child's room plus a full bath. Units include a backyard patio. The kitchen has a stove, oven and fridge. All windows have drapes/blinds. Washer and dryer in-suite.

### BENEFITS

- Backyard patio.
- Park in area.
- Daycare on campus.
- School bus service to College main door.
- Security on campus 24/7.
- Full unfinished basement with washer and dryer included.

### IDEAL FOR...

- Small families with one child or couples (married or common-law).

*Priority may be given to families with children over couples without children.*



*Block Rowhouse bedroom.*

## 4 BEDROOM FAMILY UNITS

Rent includes all utilities and cable television in the living room. Students will need to arrange to have their phone/internet hooked up and assume responsibility for their own phone/internet bill.

### \$ MONTHLY (per unit)

\$870.00

### LAYOUT

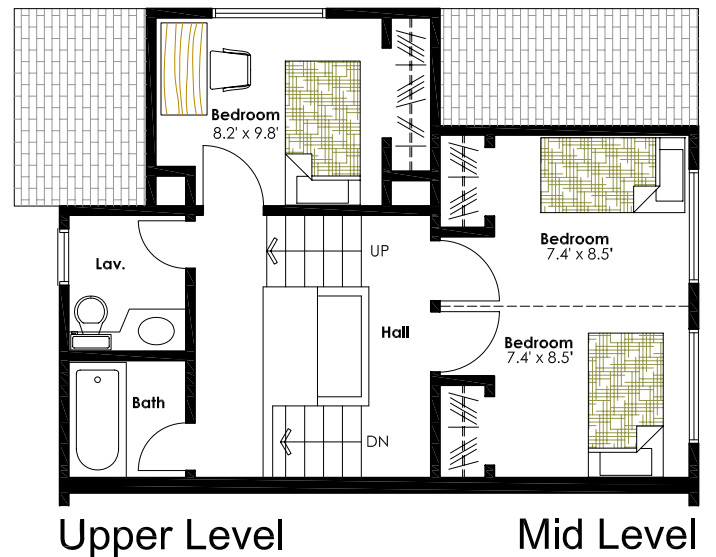
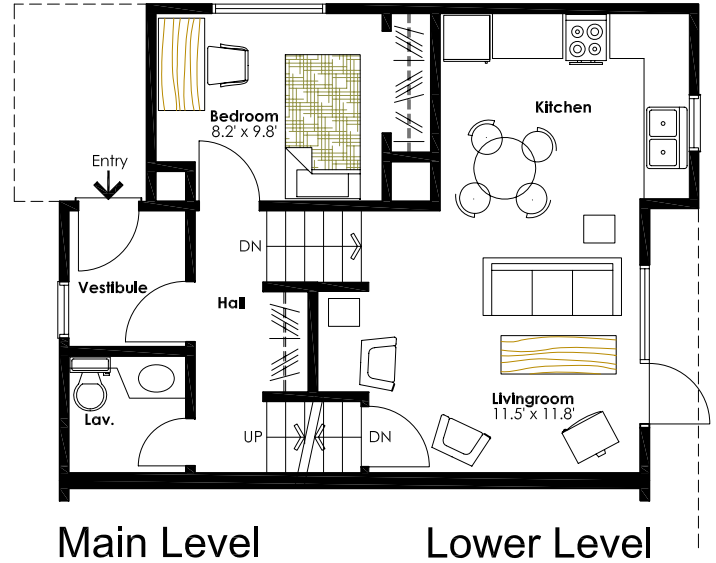
**Townhouse style - 5 split level.** Full kitchen, dining room and living area and 1-1/2 baths. Unit includes 1 large bedroom and 2 smaller rooms (large bedroom can be divided into 2 smaller rooms). The kitchen has a stove, oven and fridge. All windows have drapes/blinds.

### BENEFITS

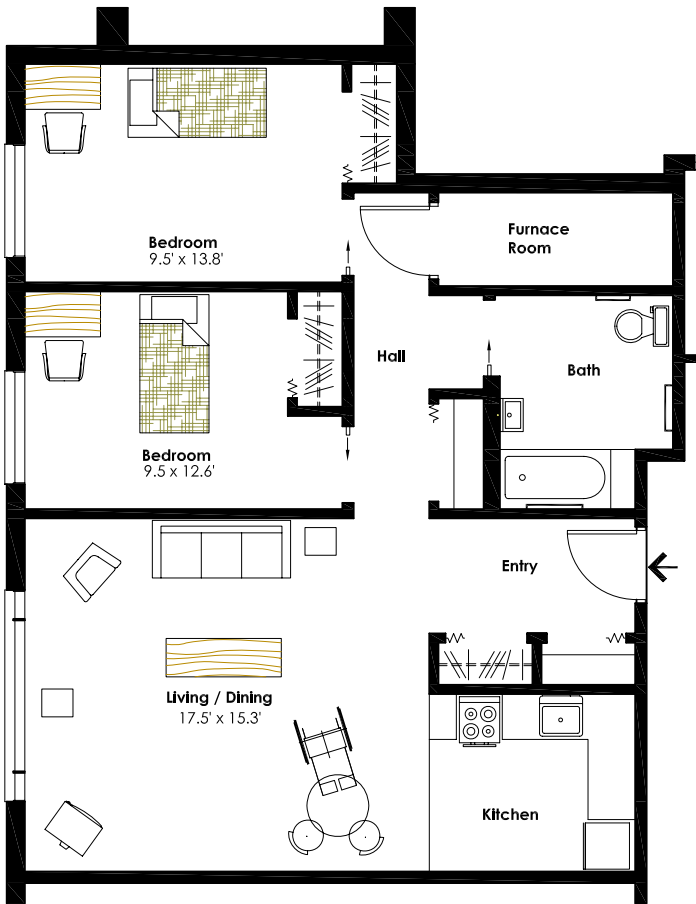
- Backyard patio.
- Park in area.
- Daycare on campus.
- School bus service to College main door.
- Security on campus 24/7.
- Full unfinished basement with washer and dryer hook-ups.

### IDEAL FOR...

- Families with more than one child.



## 2 BEDROOM BARRIER FREE



Wing 6 within the Towers building, accommodates 12 students (Six 2 bedroom units). All units are fully furnished with the exception of bedding, towels, dishes, kitchen utensils and small appliances. Rent includes all utilities and cable television in the living room. Students will need to arrange to have their phone/internet hooked up and assume responsibility for their own bill.

### \$ MONTHLY (per student)

\$525.00

### LAYOUT

**Wheelchair accessible apartment style.**

2 Students share a large living room area, kitchen and washroom designed for students with disabilities (low countertops, accessible washroom, sliding bedroom doors, etc.). Each student has his/her own bedroom with single bed, desk, desk chair and a closet. The living room has a couch, chair and coffee tables. The kitchen has a stove, microwave/convection oven, fridge, table and chairs. All windows have window coverings.

### BENEFITS

- Attached to the tower complex.
- Facility enables student to go directly to class without having to go outside.
- A laundry room is located in the Barrier Free wing.

### IDEAL FOR...

- Designed primarily for students with mobility impairments and accessibility needs.



## PERKS OF LIVING IN RESIDENCE...

- All utilities and cable (in your living room), are included in your rent, however it excludes phone and internet services.
- In the **Towers Residence**, there are two common areas with couches and tables for casual studying and just “hanging out”. One of these areas also has a T.V.
- In the **Block Residence**, there is a Common Building for everyone’s use. The Common Building has couches and chairs for studying or lounging. There is also a separate meeting room that can be booked for events and functions.
- **Coin-operated washers and dryers** are supplied, and can be found at the base of each Tower, the basement of the Residence Administration Building and in the Residence Common Building.
- There is **guest parking** for friends and family. These parking stalls are metered and scattered within each of the Residence parking lots. Parking is \$1.50 for 45 minutes, is free on weekends and after 4 pm on weekdays.
- Even though each unit is fully equipped with kitchen facilities, campus cafeteria, The Patch, Uppercrust, Tim Horton’s, Pizza 73 and Starbucks are on campus where food and beverages can be purchased. There is also a small convenience store call “The Lift” which is located near the Bookstore. “The Lift” has milk, snacks and some grocery items.
- A **fully licensed lounge** is located on campus. The “Farside” has pool tables, arcade games and live entertainment. Past bands include: The Tragically Hip, Bif Naked and Hawksley Workman. The Farside also hosts popular events such as karaoke and rockband nights as well as a Yuk Yuk’s comedy show.
- If you are not bringing a vehicle to Residence, there is still a way to get groceries. The Tenant’s Association runs a **shuttle to grocery stores** twice a month for any residents. The grocery run is free of charge.
- Let’s not forget about all the programming that happens throughout the year. Your Resident Assistants will plan programs for you and your fellow tenants that allow you to get to know people in your community better, as well as provide a healthy diversion from the stress of school work.



reds café

Hot + Fresh  
PIZZA 73

the patch



Tim Hortons

upper crust



## RESIDENCE RENTAL RATES

When you arrive at Residence and sign your Rental Agreement, you must be prepared to indicate how your rent will be paid for the term of your tenancy. Rent can be paid with post-dated cheques, a pre-authorized credit card, or in a lump sum.

Rental payments can be made at the Residence Administration Building, or College Cashiers and can be paid with cash, debit, Visa, Mastercard, American Express, or a cheque made out to RDC.

## TENANT'S ASSOCIATION FEE

Every student (single student or family), must pay a \$25 Tenant's Association fee for each academic year. This fee is due in September of each year. Apprentices pay a \$1 fee per week for the Tenant's Association, when they move in. This is a one time, non-refundable fee.

## RESIDENCE PARKING FEE

The 2010-2011 parking fee (single student and family, as of Sept. 1) is \$320.

All residence parking stalls include plug-ins. Parking is assigned on a first come first serve basis.

## SECURITY DEPOSITS

Every Residence tenant is required to pay a security deposit prior to their arrival. Deposits can be transferred from one year to the next for those students who have been accepted to live in Residence for a subsequent year.

## DEADLINES

Any fees such as damages or violation of the behavioral standards fines are due within one month of the date on the bill. If deadlines are not met, a letter will be sent to you indicating that your account is in arrears, and the possibility of eviction may follow. When you leave Residence and turn in your keys, if you are still owing on your account for damages or violations, your security deposit will be used to cover what is owed on your account.

## TERMINATION OF RENTAL AGREEMENT

If you choose to break your Residence Rental Agreement Lease, you must pay a \$50 termination fee. Also, if you are breaking your lease because you are planning to move out early, you must give the Residence Administration staff a minimum of one calendar month's notice, and fill out a Notice to Vacate form. One calendar month's notice is NOT the same as 30 days notice. You must give notice one full month prior to the month you want to move out. For example, if you plan on leaving on October 31st, you must give notice by October 1st. If you do not give a full calendar month's notice, you will be responsible for the following month's rent. Your keys must be handed in by noon on your stated move out day. Rent will continue to be charged daily until your keys are turned into the Residence Office.

## DAMAGE COSTS

During your stay in Residence, if you are responsible for any damages in your unit and/or on campus, you will be responsible to pay for said damages before you move out. If the damages have not been cleared from your account at the time of your move-out, your damage deposit will be used to clear your account of all outstanding debts relating to Residence.

## LAUNDRY

Laundry rooms are located in the Towers, Residence Administration Building and Residence Common Building.

Washer cost is \$1.00/per load, Dryers are \$0.75/load.

## WHAT TO BRING TO RESIDENCE!

Even though the units are fully furnished, you still need to bring any personal items that you want or need.

Sorry, Fido needs to stay at home!



### Recreation

- \_\_\_ Camera
- \_\_\_ Games/playing cards
- \_\_\_ Photos/photo albums
- \_\_\_ Recreational equipment (e.g. sneakers, skates)
- \_\_\_ Movies
- \_\_\_ Music
- \_\_\_ Backpack

### For the bedroom

- \_\_\_ Alarm clock (with battery back up)
- \_\_\_ Area rug
- \_\_\_ Batteries
- \_\_\_ Blankets or comforter
- \_\_\_ Clothes hangers
- \_\_\_ Computer and Internet Cable
- \_\_\_ Desk Lamp
- \_\_\_ Extension cord
- \_\_\_ Fan
- \_\_\_ Headphones
- \_\_\_ Linens (sheets to fit a single bed 39" x 80")
- \_\_\_ Pillows
- \_\_\_ Posters or other materials to decorate your suite
- \_\_\_ Power bar with circuit breakers
- \_\_\_ Radio
- \_\_\_ Telephone and connection cord
- \_\_\_ Television and cable connection cord

### For the Kitchen

- \_\_\_ Coffeemaker
- \_\_\_ Cutlery and cooking utensils
- \_\_\_ Dishcloths
- \_\_\_ Dishes
- \_\_\_ Dishwashing detergent
- \_\_\_ Food storage containers
- \_\_\_ Microwave-safe dishes
- \_\_\_ Pots and pans
- \_\_\_ Toaster or toaster oven

### For the Bathroom

- \_\_\_ Bath and hand towels
- \_\_\_ Bathrobe
- \_\_\_ Personal Toiletries
- \_\_\_ Plunger
- \_\_\_ Toilet Paper

### Other

- \_\_\_ Cleaning supplies
- \_\_\_ Flashlight
- \_\_\_ Laundry basket
- \_\_\_ Garbage bags
- \_\_\_ Slippers
- \_\_\_ Tacks or pins

# FREQUENTLY ASKED QUESTIONS



## Can residents stay on campus for the summer?

**Yes**, but space is very limited, and you will most likely be asked to move from your current location to one that is set aside for summer residents. For more information, phone or come to the Residence Office. We start accepting applications for summer Residence on February 1<sup>st</sup> of that year.

## Is being on your waitlist worth my time?

**Most definitely!** We have, in previous years, gone through a waitlist upwards of 300 people. You need to take into account that throughout the summer, applicants drop out of the waitlist due to lack of funding, choosing a different institution or a number of other personal reasons. So hang in there. Phone back throughout the summer to confirm your waitlist position, and if by the middle of July you are still far back in the waitlist, it may be time to consider off-campus housing. The best thing you can do is apply as early as possible...we start accepting applications for September on October 1<sup>st</sup>.

## Can we have guests stay with us on campus?

**Yes**, you have the privilege of hosting guests only if you have the permission of all of your roommates. A resident's right to privacy takes precedent over a roommate's right to host a guest. Each resident may only have overnight guests for a maximum of 5 nights per month...again, if all roommates agree. Your guests are your responsibility, and if they should do anything that warrants disciplinary action or a fine, you are personally responsible and will receive the fine or discipline. Also, guests can never stay in the unit unattended by the host. This will result in disciplinary action.

## If we request someone to live with us during the year, what are our chances?

If you clearly write on your application who you would like to live with, and if that person(s) does the same for you, chances are very high that we can make your living arrangement possible; however, we can't guarantee that you will get to live with whom you choose.

## Can anybody stay on campus throughout the school year?

**No.** Throughout the academic year, only full-time students are accepted into Residence. If your status drops below a full-time status, you will be asked to leave Residence.

### If I live on campus this year, will I need to reapply for next year?

**Yes**, students that are currently living in Residence that want to come back for the next academic year must apply on or after October 1st. The Residence staff does not assume you are coming back! It is your responsibility to reapply every year.

### Can we move the furniture in our units around?

**We suggest that you do not.** The furniture has been strategically located within the bedrooms. If your moving of the furniture results in any damage to the bedroom, or furniture, you will be held financially responsible for the repairs.

### What kind of privacy can you assure?

The College recognizes the student's need for privacy and will only enter a unit in specific situations:

- To perform maintenance work following a work order.
- When a Residence Staff member has reason to believe that a Residence rule or regulation has been breached.
- To do house checks of the main apartment area.
- To assess the unit for cleaning and maintenance requirements when another student has moved out.
- To deliver urgent notices or information.
- If access is required to a unit for other reasons, the Residence Office will attempt to give appropriate advance notice.

### Are candles allowed?

**Yes**, we allow candles, but please use common sense when using them. Someone must be present at all times when a candle is burning in your unit. Also, all candles must be in non-combustible containers and away from flammable material, and be firmly placed in a non-tip container designed to catch all wax drippings. Unsafe use of candles, incense, etc. will result in disciplinary action.

### Can living in Residence at College really be some of the best times of my life?

**YES!** Just remember to meet new people and have fun. This may be the only time you will ever live so close to so many of your friends!!

### If I have any other questions, who can I talk to?

Stop by the Residence Administration Building, email us at **rdc.residence@rdc.ab.ca** or phone us at **403.342.3257**.





when you get here you understand

## Contact Us

**Residence Administration 403.342.3257**

Inquiries & Tours            403.342.3148  
   1.888.732.4630  
   [inquire@rdc.ab.ca](mailto:inquire@rdc.ab.ca)

The Loop                        [portal.rdc.ab.ca](http://portal.rdc.ab.ca)

Registrar's Office            403.342.3400

Funding & Awards           403.342.3254

**Red Deer College**

100 College Blvd. | Box 5005  
Red Deer | Alberta | Canada | T4N 5H5

[www.rdc.ab.ca](http://www.rdc.ab.ca)